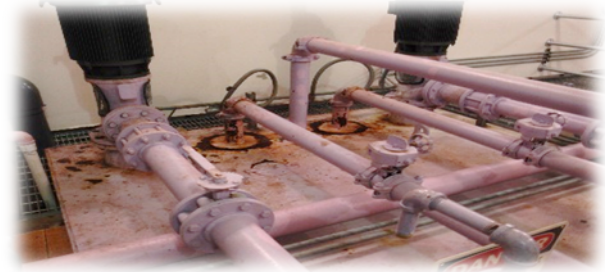


City of Yelm Water Reclamation Facility

Immediate Phase 1 Project

FREQUENTLY ASKED QUESTIONS



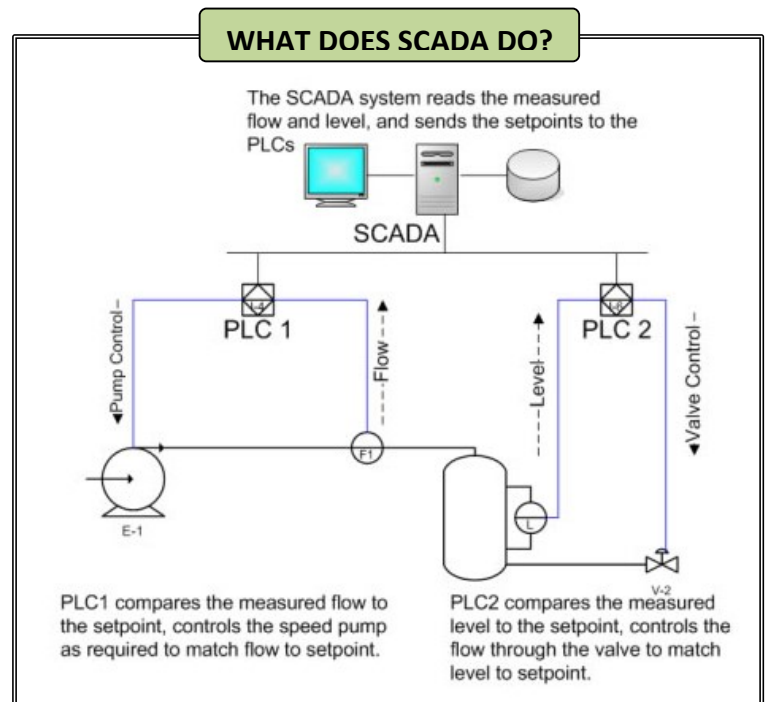
What is the Water Reclamation Facility (WRF)? Why do we have it?

The WRF was originally expanded in 1999 to provide a year-round production of an uninterrupted supply of Class A reclaimed water. The WRF is a treatment facility not all that dissimilar to a traditional Wastewater Treatment Plant. The primary distinction is the additional effort that is used in the process the wastewater for use in sustainable landscaping irrigation, to recharge groundwater aquifers, and to meet residential, commercial and industrial customer re-use water needs.

What is the Immediate Phase 1 Project?

The WRF needs to have better control systems and flow capacity management in order to meet EPA and Department of Ecology permitting requirements. Phase 1 is also needs to occur to meet today's capacity needs of the facility and add reliability. These improvements will also give us the ability to actively manage the system and reduce costs of future system improvements, which is in the best interest of all ratepayers. The project is currently in design. The immediate needs of the WRF are as follows:

1. Replace the operating system and software.
Currently, WRF operators have limited ability to control setpoints of the system, whereby making it difficult to process the wastewater.
2. Replace the out-dated hardware components of the Supervisory Control and Data Acquisition System (SCADA). SCADA is the backbone of the treatment operation and critical for the system to operate safely, reliably, and effectively.
3. Replace WRF pump station and piping. The pump(s) and piping are past their useful life and don't have adequate capacity to meet current demands.
4. Upgrade existing compressors to help with pressurization and airflow.
5. Addition of an under drain system in EQ Basin's to allow for more efficient operations and maintenance and sludge handling.



How much will the improvements to the WRF cost? How will it be funded?

The estimated cost to complete phase 1 improvements is \$2,000,000. We are working to find grant and loan opportunities to fully fund the project. Examples are: Department of Ecology Grant/Loan programs, Public Works Trust Fund and USDA loans, Direct Financing by the Utility through a Bond Issuance, and direct legislative funding assistance.

Questions or for more
Information contact:



Chad A. Bedlington, Public Works Director
City of Yelm | 901 Rhoton Road SE | Yelm, WA 98597
(360) 458-8412, office | chadb@ci.yelm.wa.us