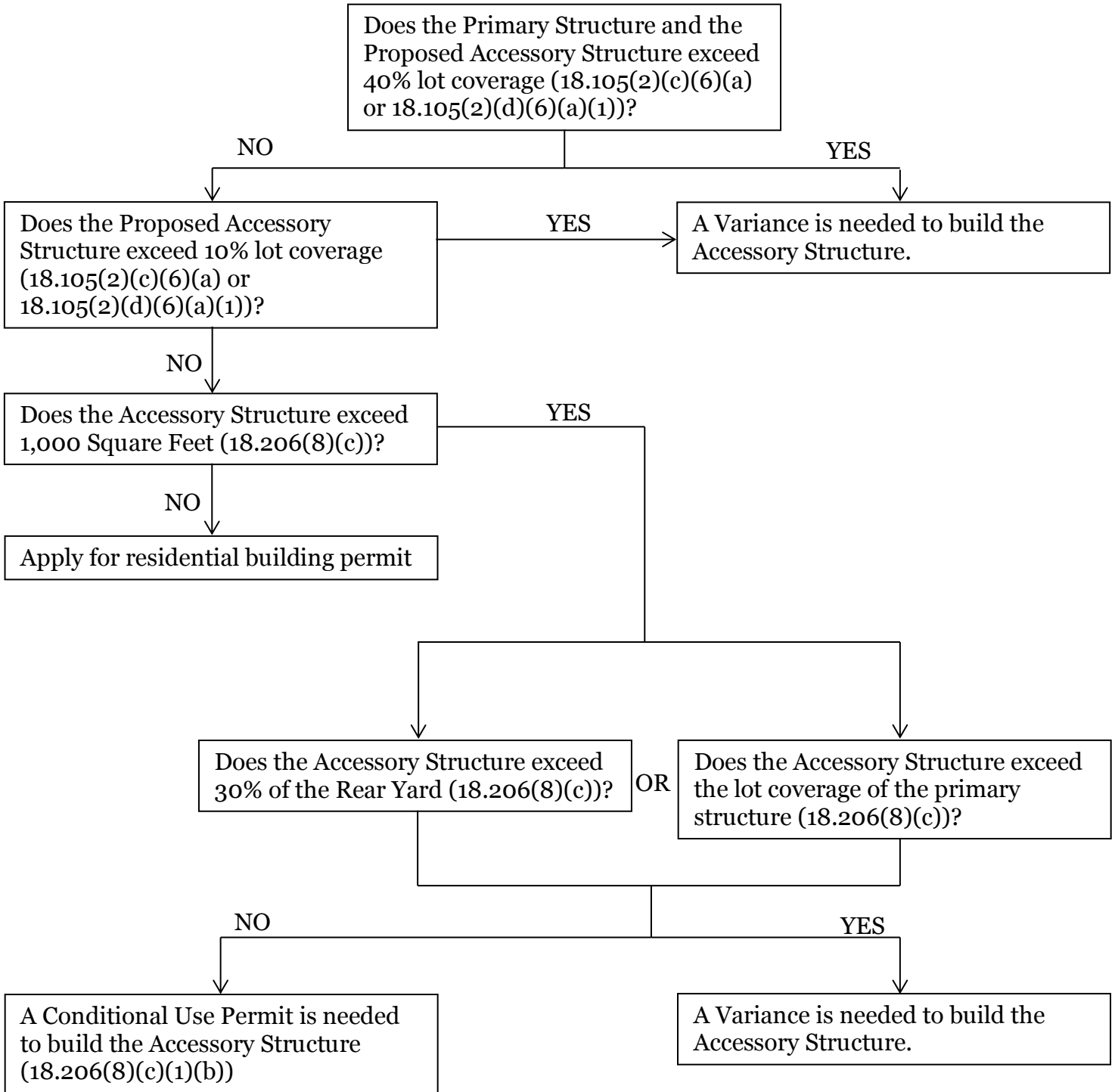


## Residential Accessory Structure Guidelines



**Always include any Accessory Use Structures that are to remain, into the Calculations.**

### **Section 18.034 Definitions.**

**Building, accessory:** A building which:

- a) Is subordinate to and serves a principal structure or a principal use;
- b) Is subordinate in area, extent, and purpose to the principal structure or use served;
- c) Is located on the same lot as the principal structure or use served except as otherwise expressly authorized by provisions of this Chapter; and
- d) Is customarily incidental to the principal structure or use. **Any portion of a principal building devoted or intended to be devoted to an accessory use is not an accessory building.**