



Engineering Solutions
for Land & Structures

RECEIVED

JUN 24 2021

CITY OF HAVERHILL
CONSERVATION DEPARTMENT

June 24, 2021

Haverhill Conservation Commission Hearing Outline
139 Amesbury Line Road
Mass DEP File #033-1499

Wetland Delineation

Wetland Impacts

Wetland Replication

Abutter Meeting

- Not Public Trails/Public Access
- No Overhead Wires
- Appearance of Maintenance Driveway

Driveway Treatments

- Stone Wall
- Cellular Confinement
- Gravel Cart Path Tracks

Peer Review Comments/Correspondence

Electrical Equipment Pollutant Mitigation

- Air Cooled
- Clean Fire Suppression
- Sealed Housing
- Mineral Oil
- Envirotemp Fluid

Goldsmith, Prest & Ringwall, Inc.

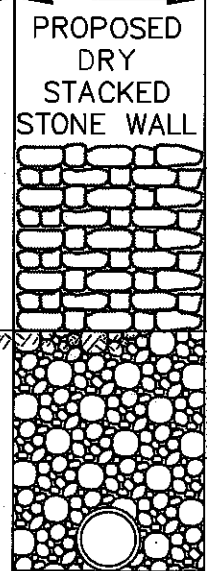
RECEIVED
 JUN 24 2021
 CITY OF HAVERHILL
 CONSERVATION DEPARTMENT

EXISTING
 TRANSFORMER (NTS)
 @ AMESBURY LINE ROAD

 EXISTING
 UTILITY POLE-31
 (TO BE REPLACED)

EXISTING 28' WIDE UTILITY EASEMENT

1' (VARIES) 2' (VARIES) PROPOSED 22' WIDE ACCESS DRIVEWAY (LOOKING FROM SITE TOWARDS AMESBURY LINE ROAD) 1' (VARIES) 2' (VARIES)



STONE DIAPHRAGM

5' OUTER GRASS STRIP

4' GRAVEL WHEELPATH

4' INNER GRASS STRIP

4' GRAVEL WHEELPATH

5' OUTER GRASS STRIP

APPROX. 90" OUT-TO-OUT OF PUMPER TRUCK TIRES (TIRES CENTERED ON GRAVEL WHEEL PATHS)

6" THICK COMPACTED 3/4" MINUS WHEEL PATH ON CELLULAR CONFINEMENT

WHEEL PATH

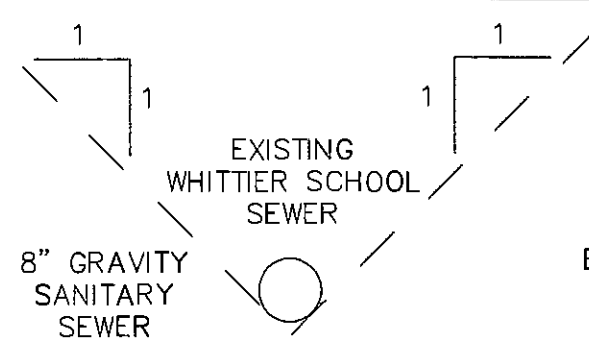
WHEEL PATH

"GRASS PAVE 2" CELLULAR CONFINEMENT STRUCTURE W/SAND & LOAM INFILL (OR EQUAL) RATED FOR H-20 LOADING (SEE ATTACHMENTS)

12" THICK COMPACTED 3/4" MINUS WELL-GRADED GRAVEL BASE

N/F DAVID P. BOUCHER ETAL

N/F THEODORE XENAKIS



8" GRAVITY SANITARY SEWER

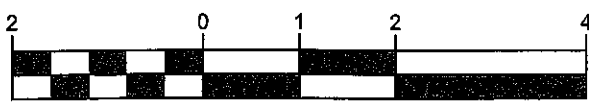
EXISTING WHITTIER SCHOOL SEWER

12" 12" 4x4" (OR 6") ELECTRIC CONDUITS

N/F THEODORE XENAKIS

N/F RONALD D. DESJARDINS

GRAPHIC SCALE



(IN FEET)
 1 INCH = 2 FEET

GPR
 Engineering Solutions
 for Land & Structures

GOLDSMITH, PREST & RINGWALL, INC.
 39 MAIN ST., SUITE 301, AYER, MA 01432
 CIVIL ENGINEERING • LAND SURVEYING • LAND PLANNING
 VOICE: 978.772.1590 FAX: 978.772.1591
 www.gpr-inc.com

PREPARED FOR:

SOLAR SMART, LLC
 1207 CONGRESSIONAL BLVD
 SUMMERVILLE, SC 29483

**SOLAR DRIVEWAY
 EXHIBIT PLAN**

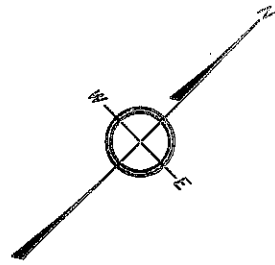
139 AMESBURY LINE ROAD
 HAVERHILL, MA 01234

DES'D BY: JFB CHK'D BY: KFB

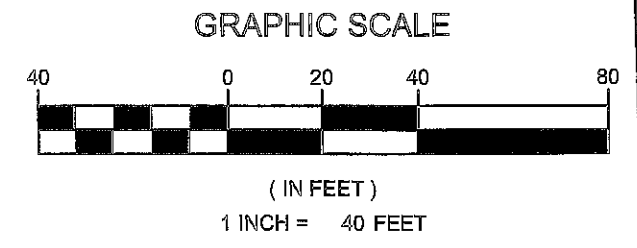
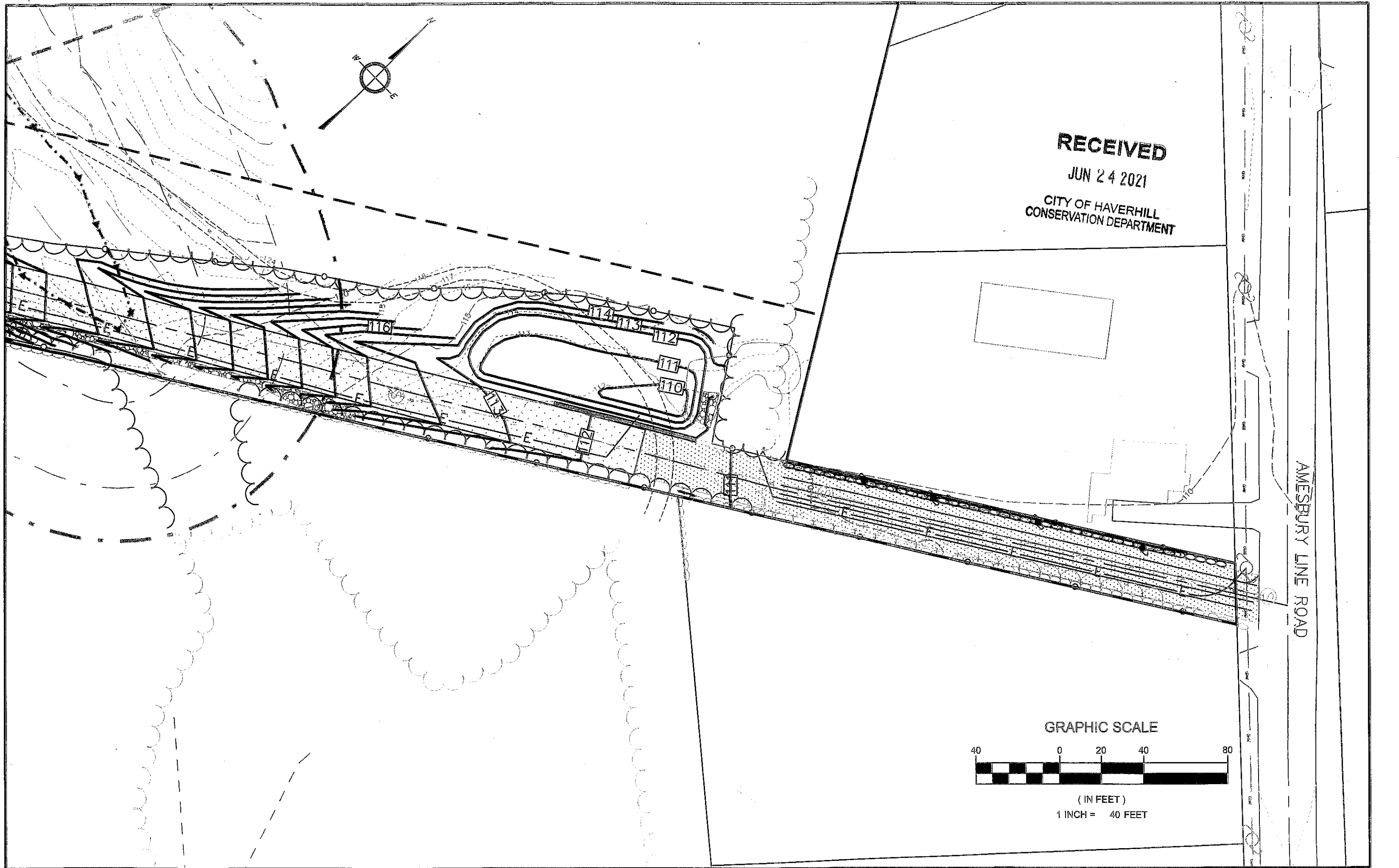
DATE: JUNE 11, 2021

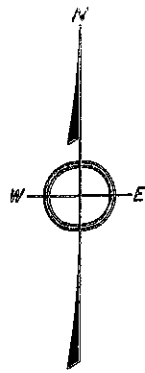
PROJECT: 181084

1 of 1



RECEIVED
JUN 24 2021
CITY OF HAVERHILL
CONSERVATION DEPARTMENT





RECEIVED

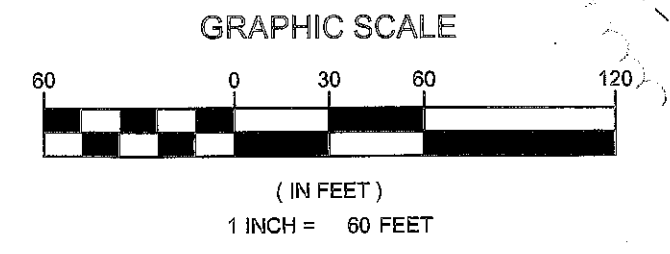
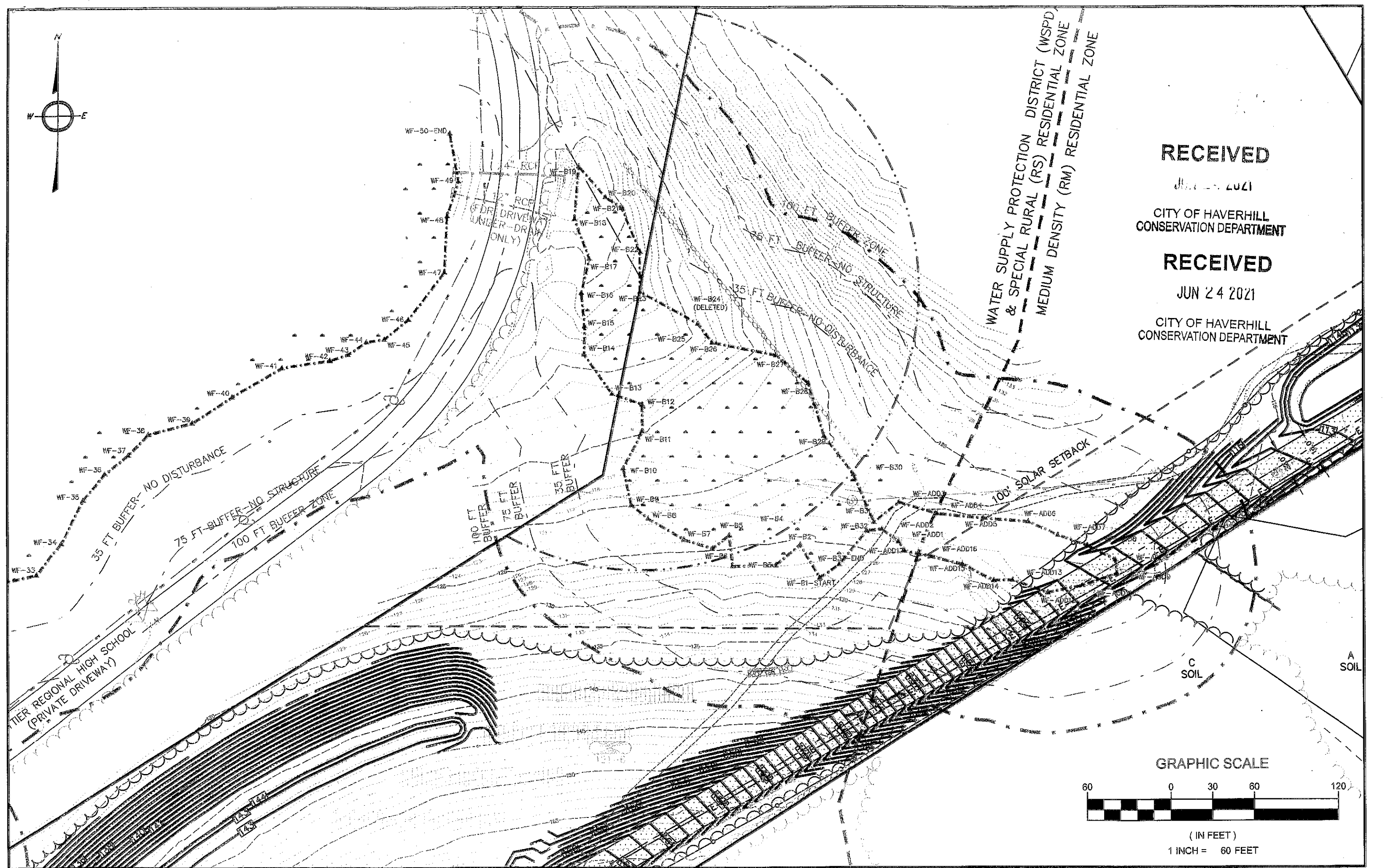
JUN 23 2021

CITY OF HAVERHILL
CONSERVATION DEPARTMENT

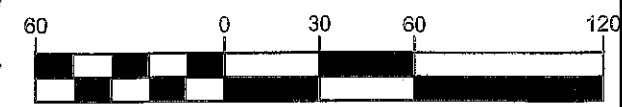
RECEIVED

JUN 24 2021

CITY OF HAVERHILL
CONSERVATION DEPARTMENT



GRAPHIC SCALE



(IN FEET)
1 INCH = 60 FEET



RECEIVED
JUN 24 2021
CONSERVATION DEPARTMENT
CITY OF HAVERHILL