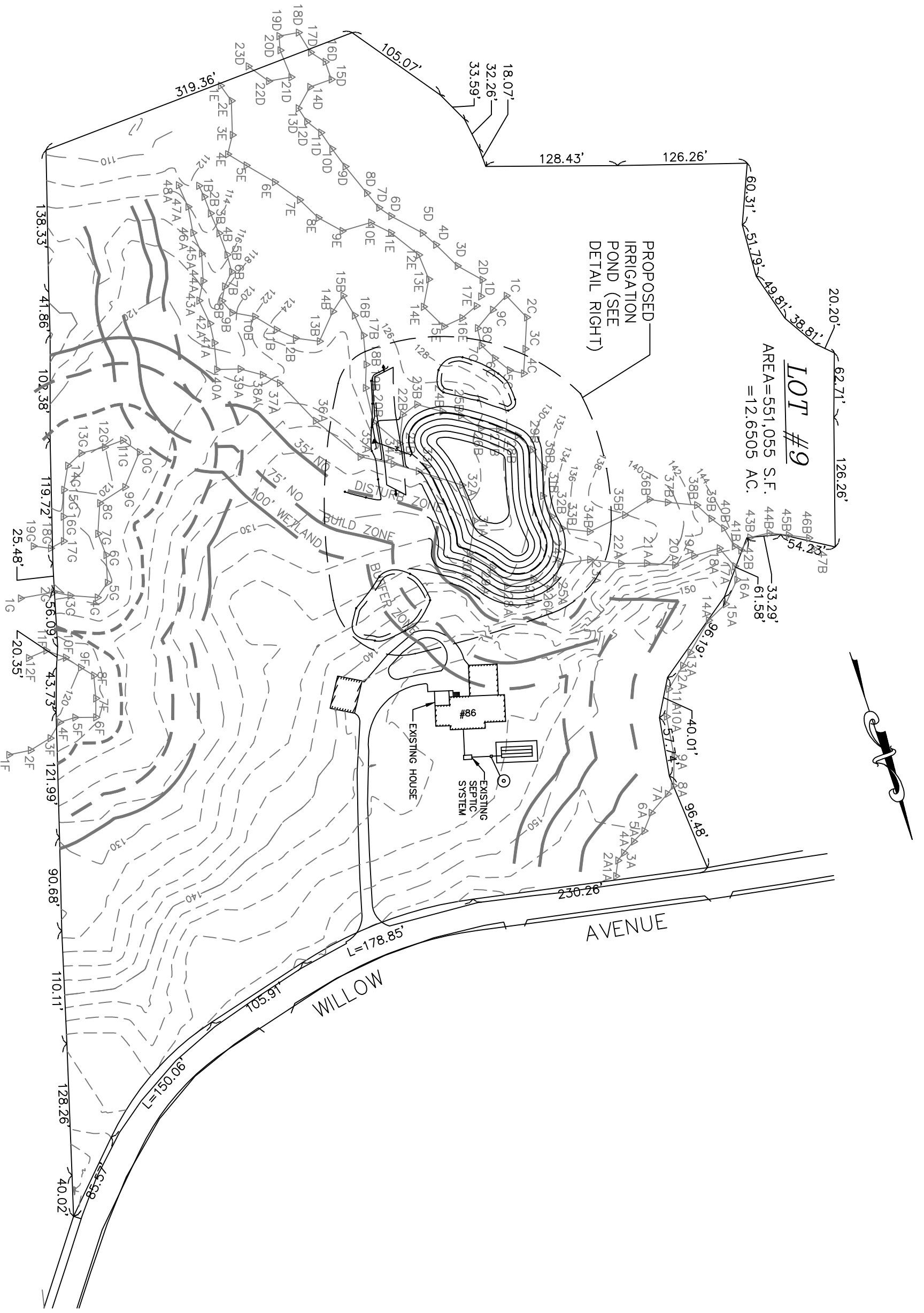
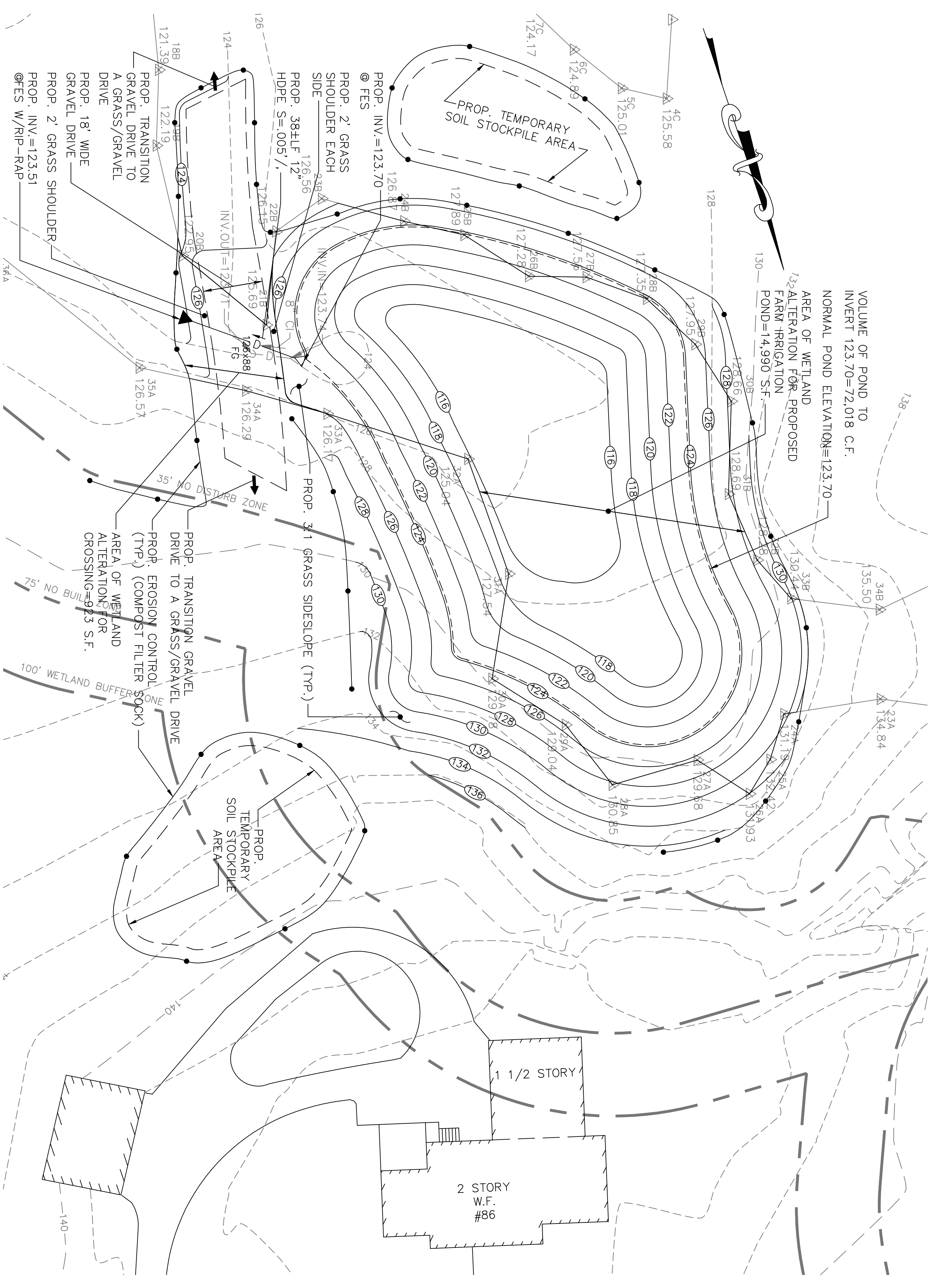


NOTES:

1. SEE CITY OF HAVERHILL ASSESSORS MAP #768 BLOCK #779 LOT #9 FOR SITE
2. SEE E.S.D.R.D. BOOK 35929 PAGE 202 FOR SITE DEED.
3. ALL NON-PAVED DISTURBED AREAS TO BE 4" LOAM & SEED.
4. TOPOGRAPHIC DATUM 1988 N.A.V.D. ESTABLISHED BY G.P.S. AND FROM CITY OF HAVERHILL RECORDS AND PLANS.
5. WETLANDS FLAGGED BY NORSE ENVIRONMENTAL SERVICES, TYNGSBORO MA.
6. GRAVEL DRIVES TO BE 6" GRAVEL THICKNESS.



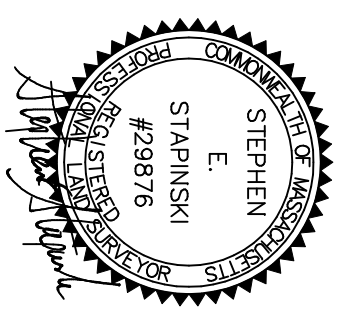
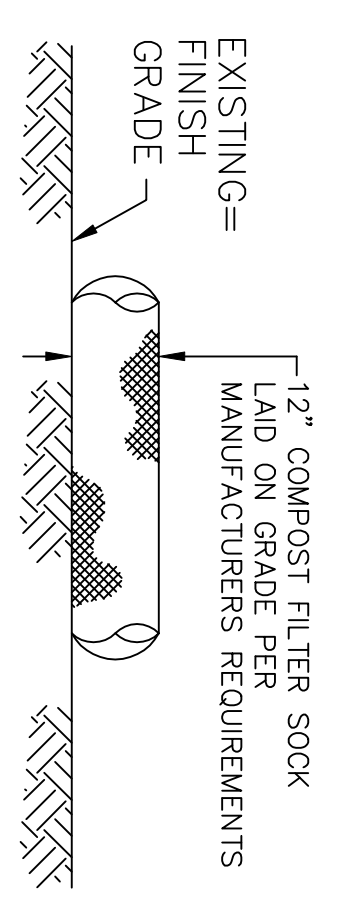
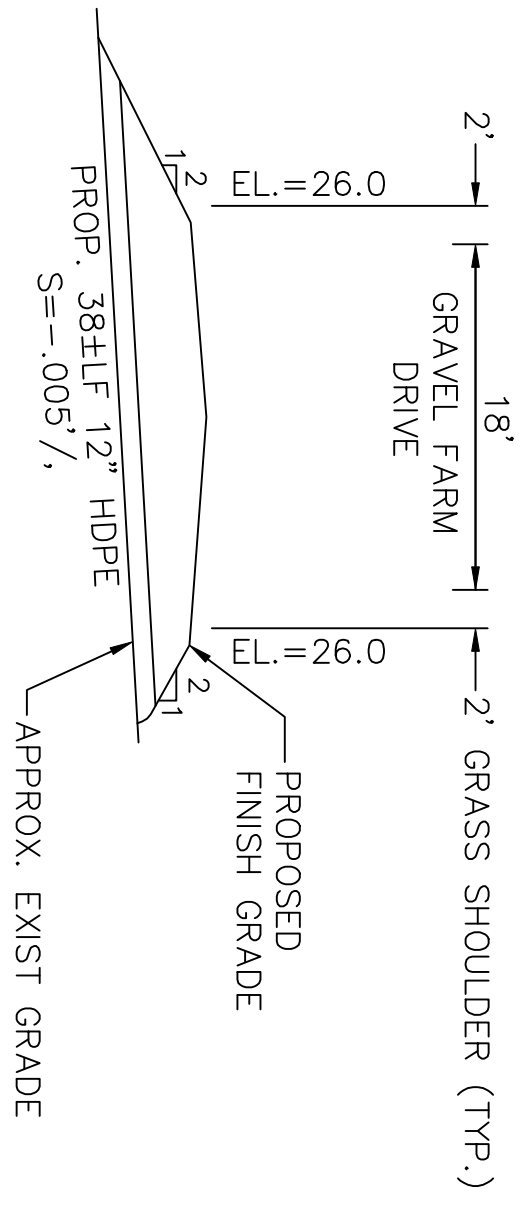
OVERALL PLAN
SCALE: 1"=100'



POND AREA
SCALE: 1"=20'

LEGEND

TYP.	TYPICAL
LF	LINEAR FEET
PROP.	PROPOSED
INV.	INVERT
12EX88	FINISH GRADE
F6	DRAIN PIPE
D	EXISTING CONTOUR
-164-	EXISTING SPOT ELEVATION
X 134.12	WETLAND FIELD FLAG
△ B7	WETLAND FIELD FLAG
△ (26)	EDGE OF WETLAND
○ (26)	PROPOSED CONTOUR



SITE DEVELOPMENT PLAN
IN
HAVERHILL, MASSACHUSETTS

PREPARED FOR
STEPHEN SMOLAK, TR.
JENNI LYNN TRUST
66 WILLOW AVENUE
HAVERHILL, MASSACHUSETTS 01835

DATE: SEPTEMBER 24, 2019

SCALE: NOTED

MERRIMACK ENGINEERING SERVICES
66 PARK STREET
ANDOVER, MASSACHUSETTS 01810
PHONE: (978) 475-3555 FAX: (978) 475-1448
EMAIL: MERRENG@AOL.COM