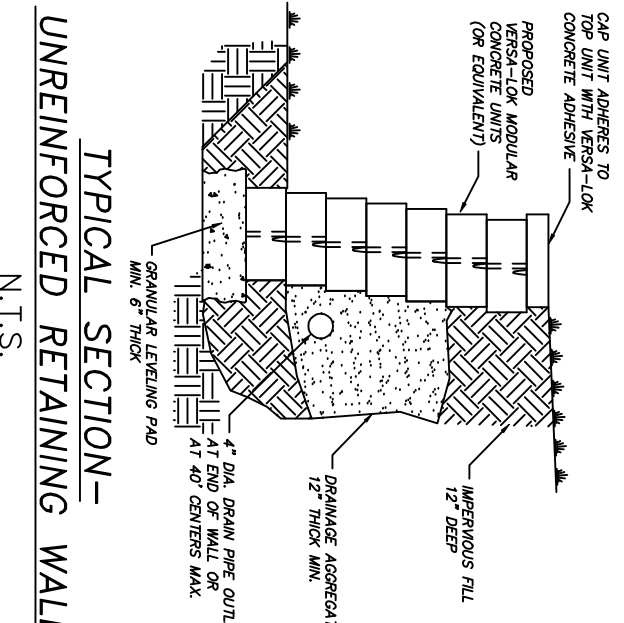


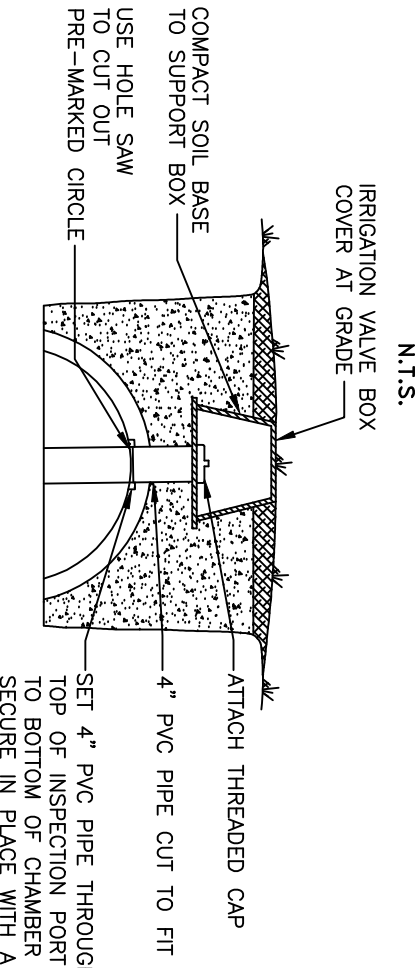
LOCUS
N.T.S.



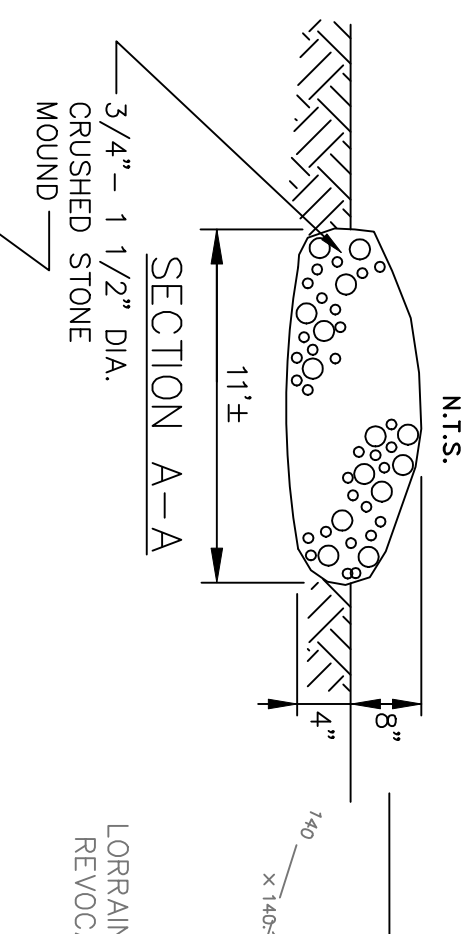
TYPICAL SECTION - UNREINFORCED RETAINING WALL
N.T.S.

200' RIVERFRONT ZONE SHOWN ON MARTIMES & NORTHEAST PIPELINE PLAN PTE=MA-A014-WB126A DATED APRIL 25, 1997

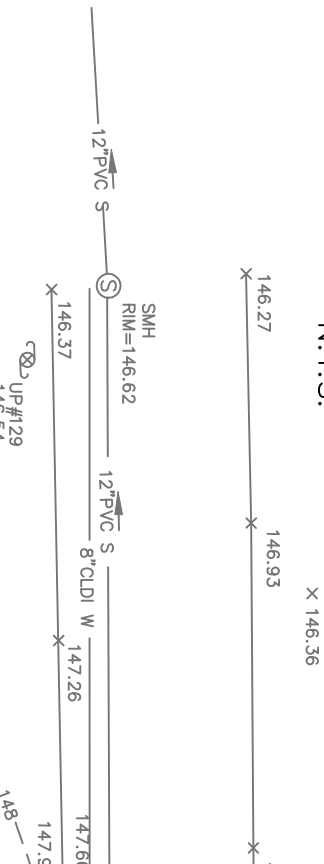
ROOF INFILTRATION SYSTEM (2 CHAMBERS)
N.T.S.



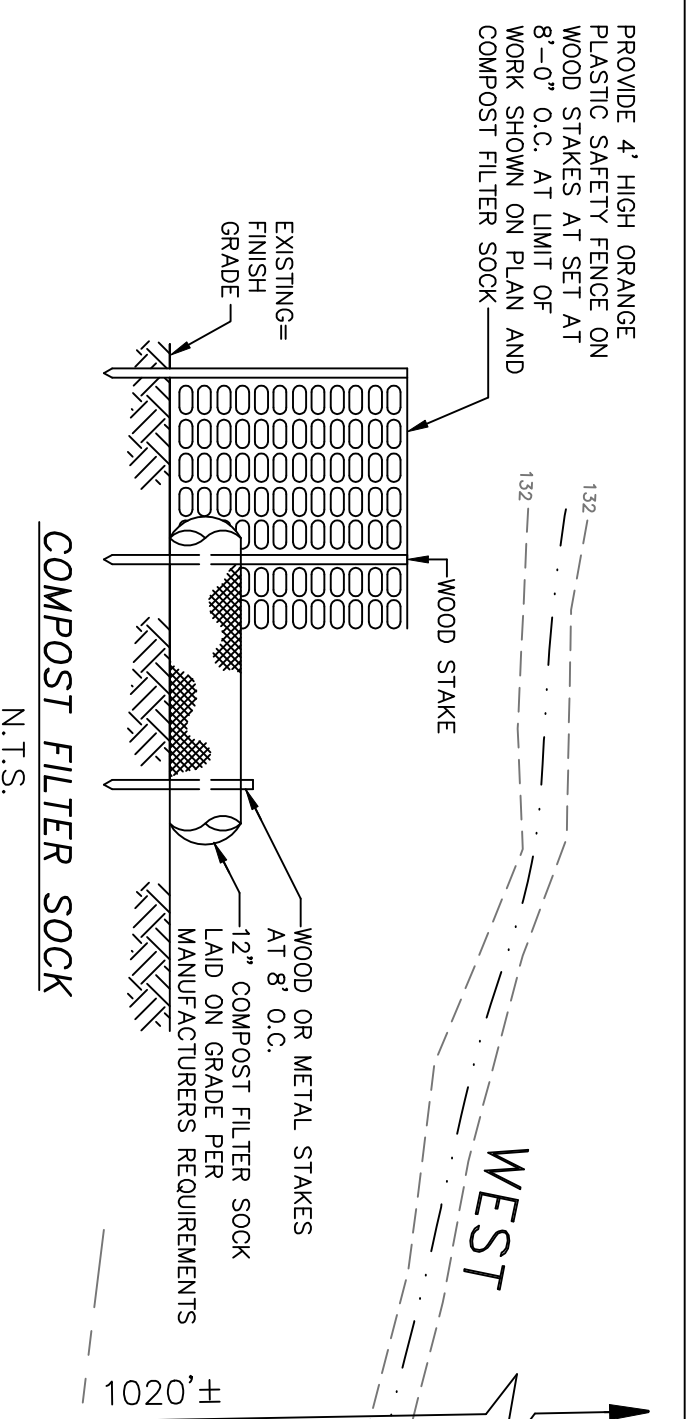
TYPICAL INSTALLATION DETAIL
N.T.S.



STABILIZED CONSTRUCTION ENTRANCE
N.T.S.

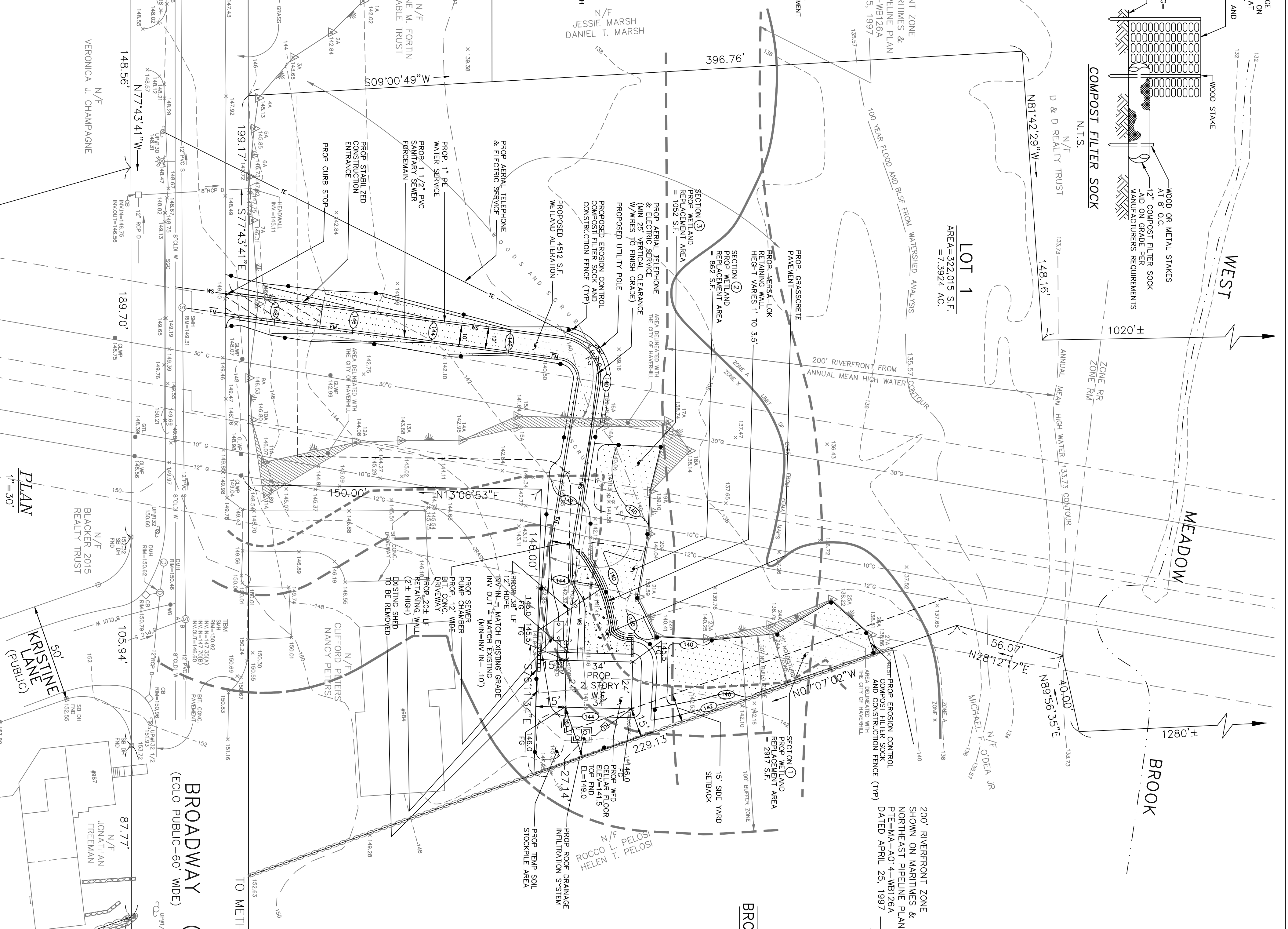


ROOF LEADER DETAIL
N.T.S.

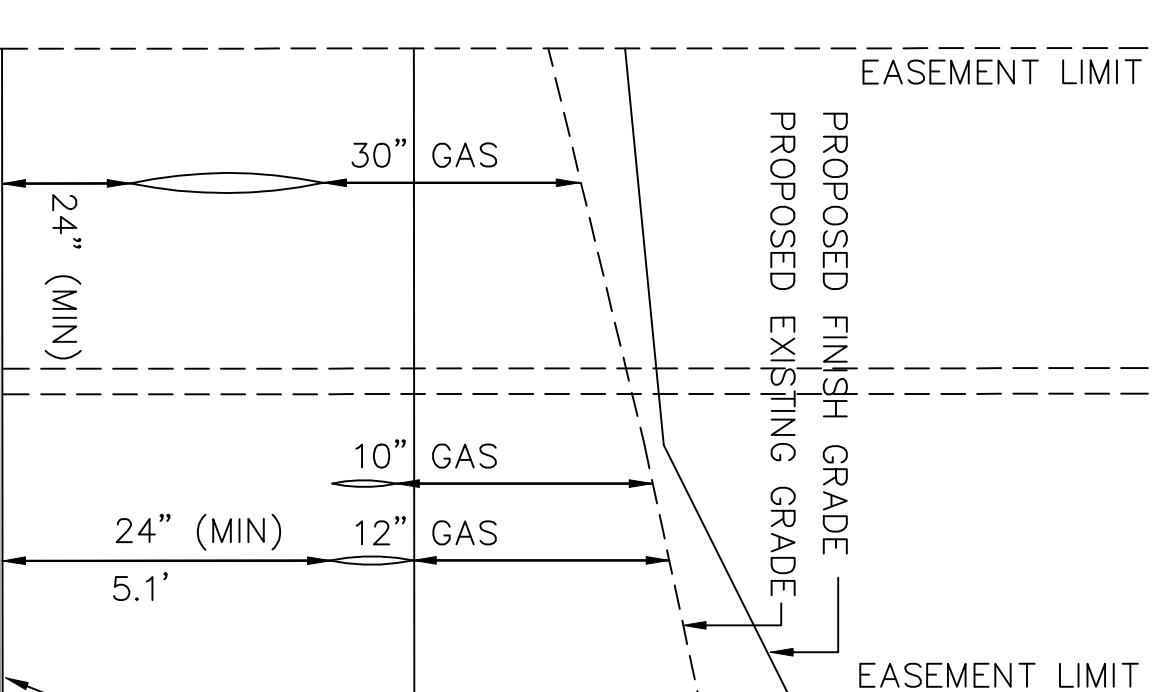
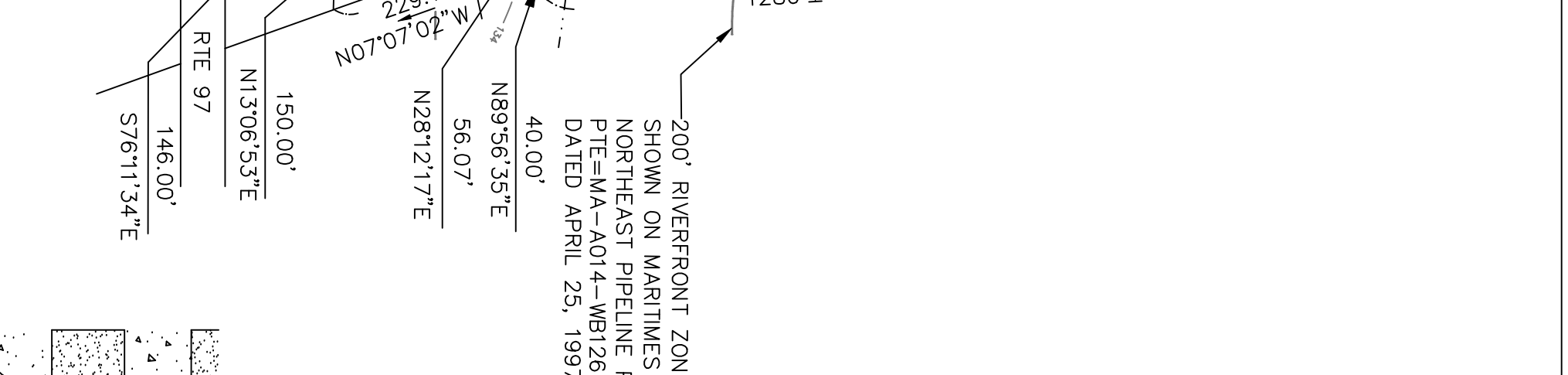


COMPOST FILTER SOCK
N.T.S.

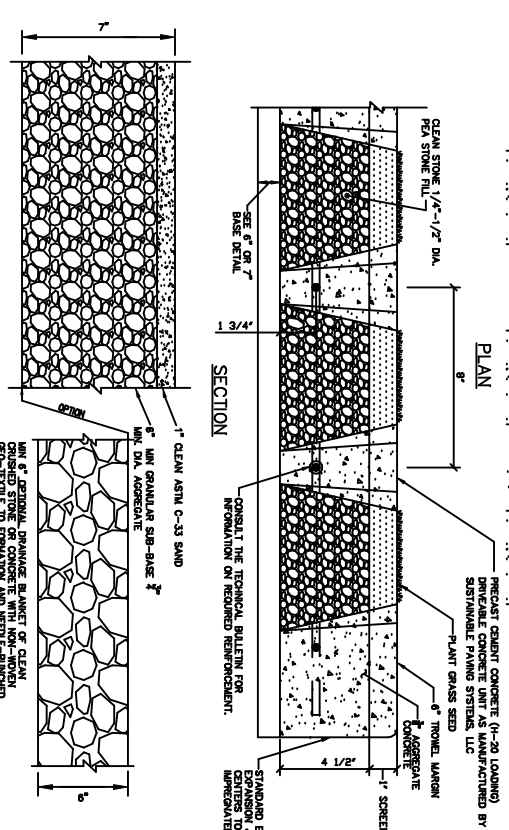
AREA=322,015 S.F.
=7.3924 AC.



INSET PLAN
1" = 200'



PROFILE OF DRIVEWAY CENTERLINE ACROSS EASEMENTS
1" = 30' H
1" = 3' V



GRASSCRETE DETAIL
N.T.S.

- NOTES**
1. SEE CITY OF HAVERHILL ASSESSORS MAP 539 BLOCK 439 LOT 18 AND DEED BOOK 35365 PAGE 422 E.S.D.R.D. FOR SITE.
 2. SEE THE FOLLOWING E.S.D.R.D. REFERENCES:
PLAN BOOK 194 PLAN 75
E.C.L.O. 2774
 3. TOPOGRAPHIC DATUM BASE IS 1988 N.A.V.D. ESTABLISHED BY G.P.S. BENCHMARK IS SEMER MANHOLE RIM LOCATED ON BROADWAY, EL.=150.92.
 4. WETLANDS DELINEATED BY NORSE ENVIRONMENTAL SERVICES.
92 MIDDLESEX RD., UNIT 4, TYNDSBORO, MA.
 5. SITE IS LOCATED IN AN ESTABLISHED 100 YEAR FLOODPLAIN PER FEMA COMMUNITY PANEL NO. 25009000677 DATED JULY 3, 2012.
 6. ZONE DISTRICT IS RM, REQUIRES 20,000 S.F. LOT AREA, 150' FRONTAGE, 25' FRONT YARD SETBACK, 15' SIDE YARD SETBACK AND 30' REAR YARD SETBACK.
 7. TENNESSEE GAS COMPANY PIPELINE MARKED IN FIELD 5/20/20 BY GAS COMPANY AND FIELD LOCATED 5/22/20 BY MERRIMACK ENGINEERING SERVICES.
 8. ALL WORK SHALL CONFORM TO CITY OF HAVERHILL WATER DEPT & DPW STANDARDS. ALL NON PAVED AREAS TO BE LOAM & SEED.
 9. TOTAL WETLAND REPLACEMENT = 4512 S.F.
 10. HOUSE TO BE SERVICED WITH RESIDENTIAL FIRE SPRINKLER SYSTEM.

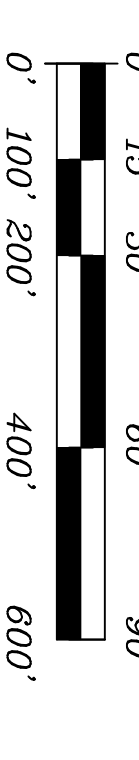
LEGEND

- SB DH STONE BOUND DRILL HOLE
- ⊙ DMH DRAIN MANHOLE
- ⊙ SMH SEWER MANHOLE
- CB CATCH BASIN
- WG WATER GATE
- GLWP GAS LINE WARNING POST
- ⊙ UP UTILITY POLE
- ⊙ HYDRANT
- ⊙ SPOT ELEVATION
- 142— ELEVATION CONTOUR
- S— SEWER PIPELINE
- D— DRAIN PIPELINE
- W— WATER PIPELINE
- G— GAS PIPELINE
- STONE WALL
- REINFORCED CONCRETE PIPE
- SLOPED GRANITE CURB
- NOW OR FORMERLY FOUND
- WOOD FRAME
- STORY
- CEMENT CONCRETE
- BITUMINOUS CONCRETE
- POLYVINYL CHLORIDE
- CEMENT LINED DUCTILE IRON
- BORDERING LAND SUBJECT TO FLOODING
- WATER SERVICE
- FM SEWER FORCE MAIN
- RD SANITARY SEWER
- ROOF DRAIN
- PROPOSED
- TEMP
- INV
- INVERT
- VERSA LOK RETAINING WALL

SITE PLAN

LAND IN
HAVERHILL, MASSACHUSETTS
PREPARED FOR
ANTONIO VIOLA
80 MAIN STREET
MALDEN, MASSACHUSETTS 02148
DATE: JULY 29, 2020 REV. MARCH 11, 2021

SCALE: 1" = 30'
1" = 200'



MERRIMACK ENGINEERING SERVICES
66 PARK STREET
ANDOVER, MASSACHUSETTS 01810
PHONE: (978) 475-3555 FAX: (978) 475-1448
EMAIL: MERRINC@AOL.COM

